



E-ACT Ousedale
School

Be Kind | Work Hard | Succeed Together

Newport Pagnell Campus

Transition 2026



Role of the Form Tutor

Your child's form tutor will be your main point of contact during their time at Ousedale School.

Pupils see their Form Tutor every morning for a 30-minute registration.

During this time, they will complete a range of activities:

- Assembly
- Reading (each tutor group will read a book together)
- Numeracy Ninjas
- Quiz
- PSHE



If anything is ever worrying your child, please encourage them to speak to their form tutor straight away so that we can help resolve any problems.

Form groups have been put together based on the information that your child's current school has given us.

We think it's important that this is a fresh start for everyone. Pupils may know some people in their tutor groups from their current school. However, it will also be a great chance to meet new friends too.



The Ousedale Standard For Pupils

The Ousedale Standard for Pupils sets out the *character* values which are central to our school community. They underpin our curriculum being derived from the school motto: *'Be Kind, Work Hard, Succeed Together.'* Our rewards and behaviour systems ensure the *character* values are developed, embedded and celebrated across the school.

Our Motto	Character Value	Definition	Examples
<p data-bbox="92 489 185 511">Be Kind</p> 	<p data-bbox="363 489 465 511">Kindness</p> <p data-bbox="401 572 426 594">K</p>	<ol style="list-style-type: none">1. We are kind, polite and considerate of the feelings and rights of other people2. We act and speak toward each other respectfully3. We follow instructions and school rules4. We look after ourselves, our wellbeing and others in our school community5. We always take care of the school and wider natural environment. We recognise our role as custodians of our planet	<ul style="list-style-type: none">• We are kind to each other• We look after our environment• We visibly help others in need• We volunteer to help in the school community• We always follow school rules and instructions• We never litter, damage or graffiti• We never bully• We are not prejudice• We are never disrespectful or rude• We never swear or fight• We never display antisocial behaviour
<p data-bbox="79 789 198 811">Work Hard</p> 	<p data-bbox="349 789 463 811">Work Hard</p> <p data-bbox="392 875 417 896">W</p>	<ol style="list-style-type: none">1. We always try our best knowing that we could not have tried any harder2. Success is achieved when ambition meets hard work and effort3. We do not settle for second best. We aim to achieve ambitious targets, and to be the best in all we do and can be4. We do not give up when we encounter difficult challenges - we are resilient5. We work hard in partnership with others as well as individually6. We come to school ready to learn - we are punctual and always have our basic equipment	<ul style="list-style-type: none">• We actively engage in our lessons and learning• Classwork and homework is completed to a high standard• We have high levels of attendance and punctuality• We have good presentation in books• We always have our basic equipment with us• We wear correct uniform with pride• We work well with others• We are never disengaged in lessons• We are never disruptive in lessons• We are never late to school or lessons• We never commit truancy
<p data-bbox="59 1153 241 1175">Succeed Together</p> 	<p data-bbox="363 1153 452 1175">Success</p> <p data-bbox="397 1232 417 1253">S</p>	<ol style="list-style-type: none">1. Success comes when we are all kind and work hard2. We are members of our school and wider community and we work in partnership to achieve our personal goals and help others succeed in theirs3. We lead when necessary, but always play our part in the team and community4. We are proud of our own achievements but equally proud of the achievements of our peers5. We celebrate success, we do not belittle the achievement of others	<ul style="list-style-type: none">• We achieve well in relation to targets set• We participate in school teams/clubs/activities• We achieve points milestones in each of the 3 Character Values• We achieve awards, ties and badges• We never belittle or devalue others' achievements

Transition Day – Wednesday 1st July



We look forward to welcoming our new Year 7 pupils on their Transition Day.

Pupils should arrive at the front of school between 8.30 and 8.40am and will be met there by staff.

Pupils will meet their form tutor and then have a short assembly.

The first hour of the day will be spent with their form tutor and they will complete some activities to help get to know each other and have a tour of the school.

Pupils will be given a 'Transition Passport' with activities for them to complete throughout the day and a reading book to read over the summer. Completion of these will lead to the award of Achievement Points in September.

Each tutor group will then take part in 4 different lessons and the day will end with a short assembly, finishing at 3.00pm.

Pupils should attend in their current school uniform and need to bring a pencil case with them.

Pupils will need to bring a packed lunch for the day and water and a snack for break-time.



E-ACT Ousedale
School

Be Kind | Work Hard | Succeed Together

Uniform

UNIFORM LIST & DRESS CODE: YEARS 7-11

Ousedale School uniform is fairly traditional and whilst it is not feasible to refer to all possible dress/appearance combinations, we expect our students to be smart with no extremes of clothing or fashion styles that could be deemed inappropriate for school. However, the list below is not exhaustive and the Headteacher has the final decision on uniform. We expect that students and parents will support us in helping to apply the dress rules indicated below:

BOYS	GIRLS
<ul style="list-style-type: none"> ➤ Plain black trousers ➤ Plain white shirt (short or long sleeved) ➤ School tie ➤ Black school blazer with badge ➤ Black or white socks ➤ Plain all black leather footwear – No boots or open toe / heel footwear ➤ Optional Green V-Neck Jumper with Ousedale logo 	<ul style="list-style-type: none"> ➤ Year 7 - 8 – culottes available from Maisies worn with black tights (no socks) ➤ Years 9 - 11 – May continue to wear their current pleated skirt available from Maisies worn just above the knee with black tights (no socks) but if this needs replacing then the new culottes from Maisies OR ➤ Plain black full length trousers (don't cling to leg) ➤ Black or white socks (if worn with trousers only) ➤ Plain white shirt (long or short sleeved) ➤ School tie ➤ Black school blazer with badge ➤ Plain all black leather footwear – No boots or open toe / heel footwear ➤ Optional Green V-Neck Jumper with Ousedale logo
<p>Essential guidance:</p> <ul style="list-style-type: none"> ➤ No black jeans/chinos ➤ Shirts tucked into trousers ➤ Ties are worn long in length and done up to neck, top button must be done up ➤ Not permitted: trainers, trainer style footwear, canvas shoes, boots ➤ No plain black jumpers 	<p>Essential guidance:</p> <ul style="list-style-type: none"> ➤ No black jeans, leggings, cropped or 3/4 trousers ➤ No fitted blouses, shirts must button-up all the way to neck and be long enough to tuck into skirt / trousers ➤ Ties are worn long in length and done up to neck, top button must be done up ➤ Not permitted: trainers, trainer style footwear, canvas shoes, boots ➤ No plain black jumpers
<p>Additional guidance:</p> <ul style="list-style-type: none"> ◆ Jewellery should not be worn to school, the only exception being the wearing of "sleeper" or stud earrings, no more than two per ear, no stretchers, no excessively large holes/holes must be plugged, no other visible piercings. ◆ Make-up may be worn if it is discreet; pale pink or clear nail varnish only, no false nails. Excessive make-up will have to be removed. ◆ No false eyelashes ◆ We would prefer top coats to be a PLAIN dark colour ◆ No boots or open toe / heel footwear ◆ Outdoor clothing must not be worn in lessons ◆ Vests/T-shirts worn as a vest must be plain white ◆ No extreme or unnatural hair/hairstyles, Inc. the use of unnatural hair colours, hair extensions etc. ◆ Hoodies, jumpers and other non-listed items are not acceptable for school dress ◆ Religious headwear such as turbans & hijabs must be in school colours (black, white, green, blue or combination thereof) 	

All school uniform, including PE kit and the optional additional uniform, can be purchased from Maisies, Church Street, Wolverton or ordered from them at www.maisies-superstore.co.uk. Subject to availability, second hand uniform can be purchased at the Willen Hospice Olney shop (Olneyshop@willen-hospice.org.uk) or Willen Hospice Newport Pagnell shop (NewportPagnellShop@willen-hospice.org.uk)

STUDENTS ARRIVING AT SCHOOL WEARING INCORRECT UNIFORM WILL INCUR A DETENTION AND BE PROVIDED WITH THE CORRECT UNIFORM FROM THE SCHOOL'S BOOT ROOM. ON OCCASIONS STUDENTS MAY ALSO BE SENT HOME TO GET CHANGED OR PLACED IN THE PERSONALISED AND INCLUSIVE LEARNING CENTRE (PILC) IF THEY DO NOT COMPLY FULLY WITH THE DRESS CODE.

We want the students of Ousedale School to wear their uniform with pride. This means:

- Ties worn properly – up to their top button
- Shirt tucked in
- Blazer on (unless told otherwise by their teacher)
- Black tights to be worn at all times
- Shoes must be plain black all over (See images of acceptable styles on next slide)
- School trousers must not be tight fitting. They must be loose at the ankles
- Green V-neck jumper with Ousedale logo (optional) that can be worn under the blazer. No black jumpers



E-ACT Ousedale
School

Be Kind | Work Hard | Succeed Together

School Shoes



E-ACT Ousedale
School

Be Kind | Work Hard | Succeed Together

Medication

We have already received information about any medical issues your child may have ready for September, but please keep us updated if anything changes.

If you haven't returned this information yet, please do so asap. The form is on our new starter page on the website. <https://www.ousedale.org.uk/parents/health-coordinator-team>

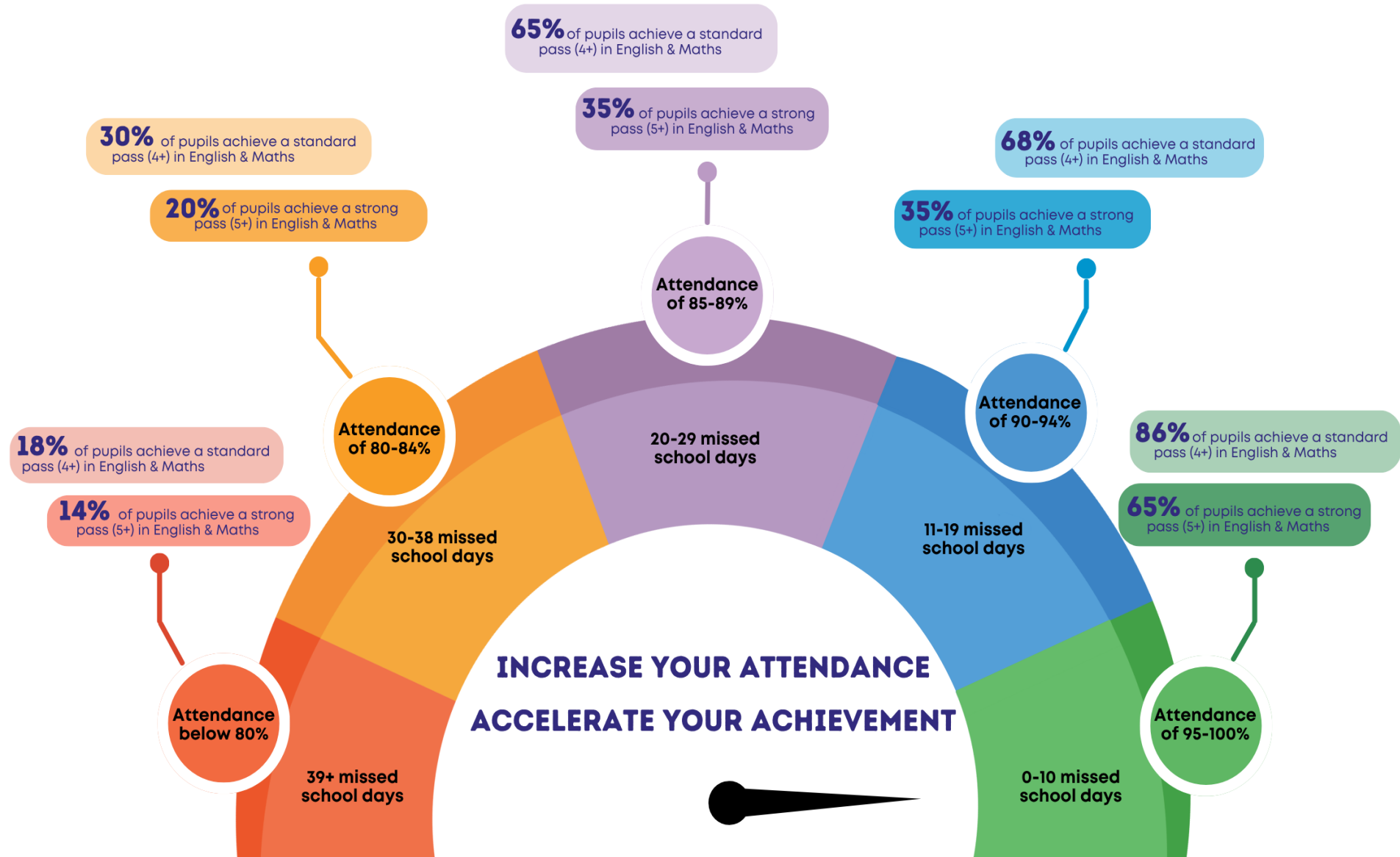
Transition Day Arrangements:

- If your child needs to be issued with medication on their transition day (1st July) please complete the medication consent form beforehand and e-mail it to the Health Co-Ordinators. This can be found on the school website.
- Please bring the medication to the school reception between 8.30 -8.50 am.
- If pupils are prescribed any emergency medication e.g. inhaler or EpiPen, these should be brought in and kept with the pupil all day (in their bag).
- Any concerns or questions, please email: healthcoordinatorsnp@ous.e-act.org.uk



EVERY DAY COUNTS

ATTENDANCE AFFECTS ATTAINMENT



The School Day

8:40am - 9.10am
Registration

9.10am - 10.10am
Lesson 1

10.10am - 11.10am
Lesson 2

11.10 - 11.40am
Break 1

11.40am - 12.40pm
Lesson 3

12.40pm - 1.40pm
Lesson 4

1.40pm - 2.10pm
Break 2

2.10pm - 3.10pm
Lesson 5



Punctuality

It is important that pupils are on time for school every day. They need to be at their form room, ready to start the day by 8.40am.

If they are late to school, they will be given a 20-minute detention at break 1 or break 2



E-ACT Ousedale
School

Be Kind | Work Hard | Succeed Together

What Lessons Will Your Child Be Doing?

Pupils will be taught some lessons as a form group, but not all of them.

For **Maths, English and Science** classes will be mixed with pupils from different tutor groups. These will be reviewed by October half term following baseline assessments.

Pupils will also have lessons in a number of other subjects: **History, Geography, Modern Foreign Languages (they will have chosen Spanish or French), RS, Music, IT, Design Technology, Art, PE, Drama and Literacy / Numeracy**. Some of these are taught as a tutor group and some are mixed with pupils from different tutor groups.

Pupils will have library reading sessions and take part in the Bedrock programme as part of their English lessons to promote reading and literacy skills.



E-ACT Ousedale
School

Be Kind | Work Hard | Succeed Together

Homework

In the first half term, only core subjects (Maths, English and Science) will set homework once a week, to support transition to secondary school.

After October half term students will receive the following homework:

- Once a week: Maths, English, Science, MFL, History, Geography.
- Once a fortnight: PER, Music, IT, Art, Drama, Technology.

As a guide, pupils can expect that each homework task or activity may take up to 30 minutes.

Homework will be set online using Microsoft teams.



E-ACT Ousedale
School

Be Kind | Work Hard | Succeed Together

Basic Equipment

It is essential that pupils have the right equipment for their lessons.

Pupils will need a good-sized bag as they need to carry their books with them for that day. There are no lockers at the NP Campus.

Please ensure all equipment is named in case it gets lost. (Lost property is stored in our boot room which is opposite the PILC.)

- Pencil case
- Black Pen x2
- Pencil x2
- Purple pen
- Pencil sharpener
- 30cm Ruler
- Rubber/eraser
- Calculator
- Reading Book / bookmark



PE and Sports, Music and Drama

Pupils will get the opportunity to try a range of sports at Ousedale. They will have the opportunity to take part in lunch time and after school clubs and try out for our sports teams.



There are also lots of music and drama clubs both at lunch times and after school for them to get involved in, along with our regular school productions.



E-ACT Ousedale
School

Be Kind | Work Hard | Succeed Together

Clubs and Extra-curricular Activities

There are a number of **extra opportunities** for pupils, and we would encourage pupils to take up these opportunities. A timetable for these will be shared in tutor time in September.

Leadership roles – we will encourage as many pupils as possible to take part in Leadership roles. We have a range of roles available for pupils, including:

- Student Council
- Sustainability Leaders
- Wellbeing Leaders
- Library / Music / Sport / Drama / Art Leaders
- Literacy and Numeracy Leaders
- Transition Leaders

We will encourage pupils to take part in school, national and international **competitions**.



E-ACT Ousedale
School

Be Kind | Work Hard | Succeed Together

Breaks and Lunch Times

The canteen is open before school, break and lunch time.

In the first week, year 7 lunch starts 5 minutes earlier than other pupils so that they have priority going into the canteen.

There are outside areas that we would encourage pupils to use to sit and meet up with their friends.

The SEND area runs a lunch club every day.

We run a Wellbeing drop-in session every Tuesday and Thursday lunch time that pupils can attend.



E-ACT Ousedale
School

Be Kind | Work Hard | Succeed Together

Canteen

Our Catering partners offer breakfast, mid morning break and a lunch. Meal deals are priced at £3.20 which includes a main, side and a drink.

We are currently in the process of changing our catering supplier so further details of our new catering offer will be shared with all parents and carers in due course.



E-ACT Ousedale
School

Be Kind | Work Hard | Succeed Together

Mobile Phones

Whilst students can bring their mobile phone in to school, this is completely at their own risk. The school is not responsible for mobile phones if they get lost, damaged or stolen.

Following recent government guidance for mobile phone use, we will be outlining our revised mobile phone policy with parents and carers before the end of the school year.



E-ACT Ousedale
School

Be Kind | Work Hard | Succeed Together

SEND

If you have any SEND concerns that you would like to discuss prior to September, please use the following triage email address:

sendtriage@ousedale.org.uk

Helen Bacon (SENDCO)



Come & Meet Our SEND Team

Wednesday 24th
June

10:10-11:10 @ both campuses

 E-ACT Ousedale
School
Be Kind | Work Hard | Succeed Together

PARENT EMPOWERMENT EVENING: TRANSITION TO SECONDARY



E-ACT Ousedale
School



**OUSEDALE SCHOOL
OLNEY CAMPUS**

**Tuesday 23rd June
6-8pm**

EMPOWER ♦ SUPPORT ♦ THRIVE

BIG CHANGES AHEAD! READY FOR SECONDARY SCHOOL?

Starting secondary school can feel daunting, but with the right support, your child can flourish.

Our next Parent Empowerment Evening has been designed to help parents and carers of current year 6 pupils confidently support their child through this exciting transition.

Join us for an inspiring evening packed with practical advice, real strategies, and expert support.

Scan the QR code or visit our website:
www.ousedale.org.uk



**Set routines and
boundaries**



**Encourage
independence**



**Understand different
parenting approaches**



**Support your child
emotionally and
academically**

**BOOK YOUR
FREE PLACE
VIA
EVENTBRITE**





We

Need

You

SUPPORT SCHOOL EVENTS

SHARE YOUR SKILLS AND IDEAS

CONNECT WITH OTHER PARENTS

MAKE A DIFFERENCE TO YOUR CHILD'S EDUCATION

Contact the PTA President Caroline Barrass: PTA@ousedale.org.uk

FAQs

How can I apply for support with transport?

Visit the website below if you require additional information regarding school transport:

<https://www.milton-keynes.gov.uk/schools-and-lifelong-learning/information-for-parents/home-to-school-transport>

What platforms are used to communicate with parents?

EduLink is used to communicate with parents. Absences can also be reported to the school via EduLink. The ClassCharts app is used to update parents on behaviour and attendance. This is a live app.

How do students pay for their food in the canteen?

Parents/carers can upload money on to their account through ParentPay. We advise parents to set a maximum daily spend on their account. Login details for ParentPay will be posted by the 2nd week of August and you will then be able to add catering monies. The option to purchase calculators and geometry sets will be available in September.

How can I apply for Free School Meals?

Recent Government changes mean that eligibility does not automatically continue when moving up from primary school and you must re-apply if you believe you are eligible.

You can apply for Free School meals using this link. <https://www.cloudforedu.org.uk/ofsm/sims>

If need more information, please visit:

<https://www.ousedale.org.uk/parents/free-school-meals>