



Welcome

Sixth Form Open Evening 2026

Paul McFadden – Headteacher

Rose Camden – Director of Sixth Form



E-ACT Ousedale
School

Be Kind | Work Hard | Succeed Together

FAQs:

Can students leave during the day?

Is there a programme if I want to go to Oxbridge? Medicine?

What are the group sizes?

What is the dress code?

Is there SEND help available?

Is there financial help available?

How many pupils do you take from other schools?

Where can I go to get help with my choices?

Who we are ...

A warm, inclusive sixth form, dedicated to success.

A stepping-stone to university, apprenticeships, and careers.

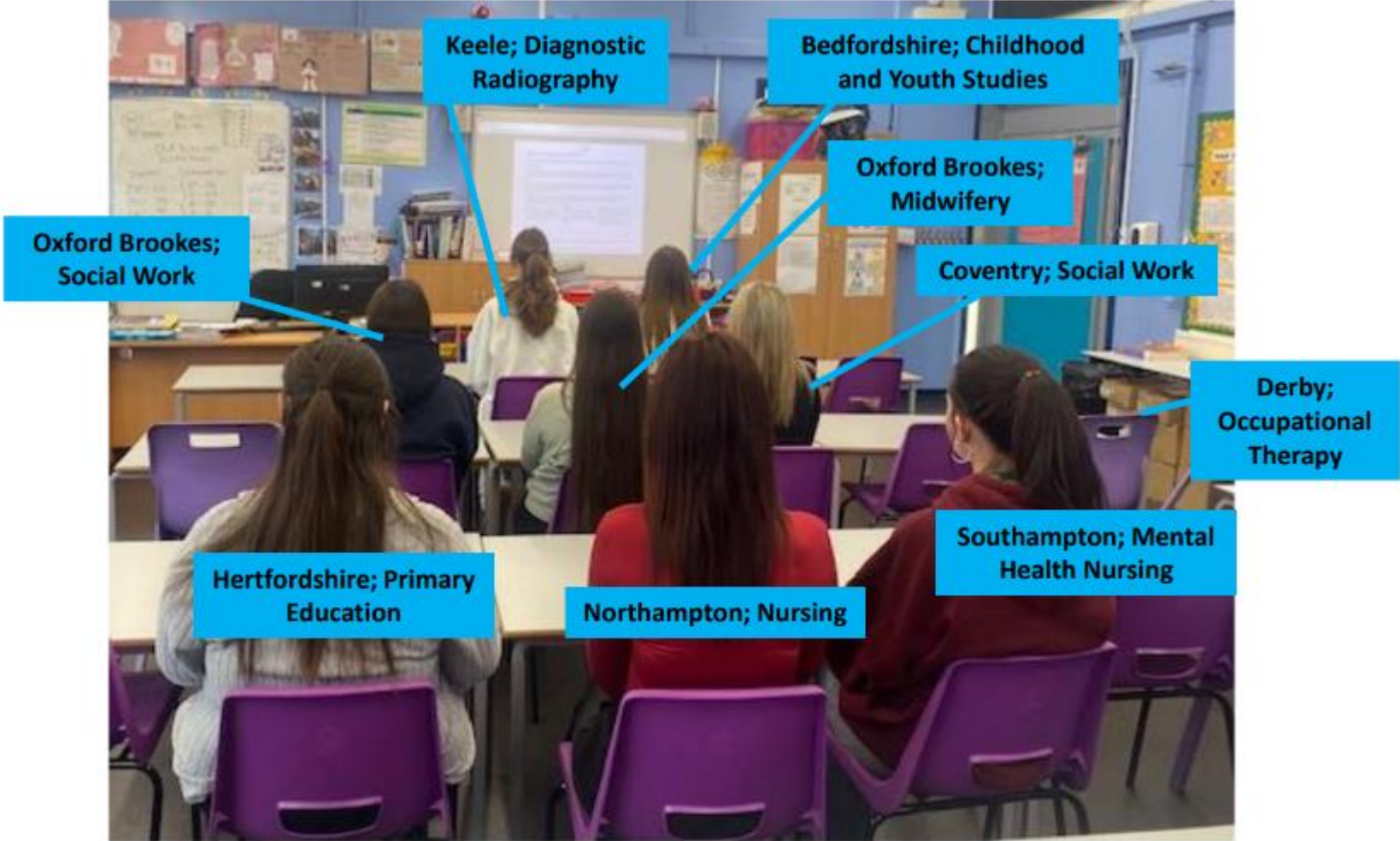
- 45% of all grades awarded at Ousedale were B or higher
 - A fifth of grades were A*/A
- Exceptional progress during Post-16 studies with some pupils achieving, on average, 2 grades higher than expected across their subjects
 - 85% of the cohort applied to and accepted university places
 - 40% went on to attend Russell Group universities
- A continuing trend of higher-level apprenticeships being applied for and accepted by students



University of Leicester	Criminology
	Economics
	Criminology with Forensic Psychology
	Law
	International Relations
Manchester Metropolitan University	Accounting & Finance
	Marketing
	Psychology
	International Relations
	Human Geography
	Law
Nottingham Trent University	Sound Engineering & Audio Production
	Psychology
	Criminology
	Business
Oxford Brookes University	Biomedical Science
	Midwifery
Royal Conservatoire of Scotland	Music Performance
Royal Holloway, University of London	Financial & Business Economics

University of Oxford	Biology
University of Plymouth	Illustration
	Adult Nursing
University of Portsmouth	Psychological Sciences
University of Reading	Biological Sciences
	Biomedical Sciences
	Psychology
	English Language & Linguistics
	Law
	Environmental Management & Sustainability
University of Sheffield	Physics and Astrophysics
	Biomedical Science
	Pharmacy
University of Southampton	Occupational Therapy
	Physical Geography
	Mathematics
	Mechanical Engineering
	Aeronautics and Astronautics

Destinations



Ofsted January 2025

'Pupils, including those in the sixth form, attend a happy, respectful and inclusive school. They proudly embody the school's vision of 'be kind, work hard, succeed together'. There are warm, positive relationships between staff and pupils. Pupils know that staff want them to grow up to be well-rounded individuals who achieve highly in all they choose to do.'

'Pupils are active citizens. They value the various opportunities to develop leadership qualities. Pupils participate in a wide range of extra-curricular experiences, including trips abroad and visits to local care homes. The various popular choirs, orchestras and ensembles are at the heart of the vibrant atmosphere in the school.'

'Pupils attend school very regularly, and their behaviour is typically polite, calm and focused. This is evident throughout the school, but most especially in the sixth form.'

'Pupils' personal development is exceptional and central to the ethos of the school... Students in the sixth form are articulate. They take up opportunities to join in with debates in school and in the local area, including when they represent the school at the Milton Keynes Youth Council.'

Why choose us...

When you could go anywhere!

- Excellent teaching
- Supportive Tutors
- A wide range of subject choices
- Strong results
- Enrichment opportunities
- Personalised support with wellbeing and SEND

Outcomes

There are two ways outcomes are measured

The first is the average grade a student leaves with.

Ours is C+.

The other is called value added.

This relates to the progress a student makes at a school.

GCSE average grade



Minimum target grade



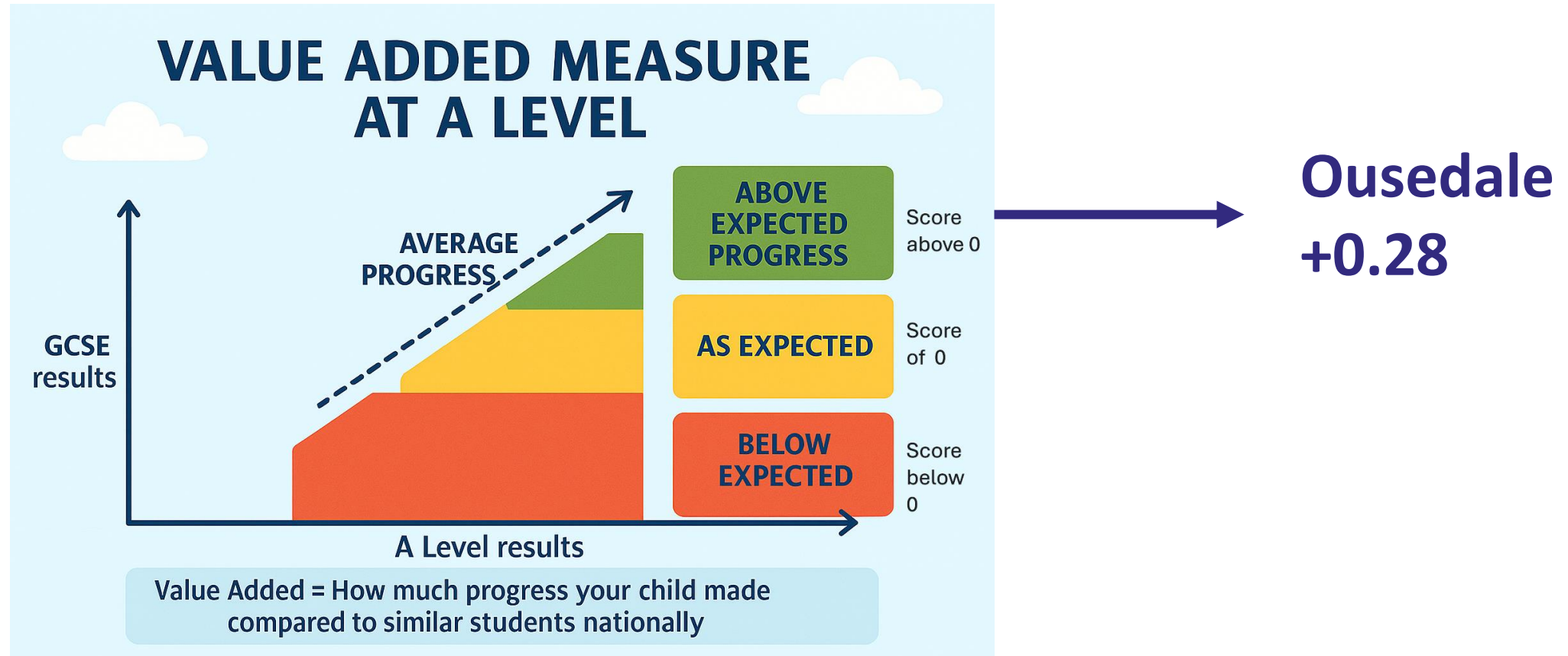
Grade awarded at A-level



What does value added look like?

Starting Point: GCSE grades (baseline)

Expected Progress: dotted line showing predicted A-level grades based on GCSE performance



Our Ambitious and Broad Curriculum

Our 'Character' Curriculum

Ambition

To build character through our character values

Character Values:

Kind

Kind to each other, ourselves, the school and wider environment

Hard Working

Always our best effort, a positive attitude to learning

Successful

Achieving our personal and collective goals and aspirations

Our 'Experiences' Curriculum

Ambition

Take pupils 'beyond their own experiences'
Broaden horizons
Develop cultural capital

Wider Experiences, Cultural Capital:

- Extra-curricular
- Enrichment
- Trips/visits
- Clubs
- Pupil leaders

Our 'Knowledge Skills' Curriculum

Ambition

Key concepts
Core knowledge and skills
Powerful knowledge

Knowledge, Skills, Qualifications:

- National Curriculum
- Basic skills: literacy, numeracy
- GCSEs/VQs
- A Levels/VQs
- Tutor time: PSHE/RSE/FBV/SMSC/CEIAG



Ousedale School
2025 - 2026



DSP Photography

	Block A (5 Hours)	Block B (5 Hours)	Block C (5 Hours)	Block D (5 Hours)	Block E/Core Curriculum
Level 3 Academic A Level 2 Year Courses	Business Core Maths * English Language English Literature History Mathematics Further Maths Sociology Photography Psychology	Art Chemistry Economics Geography Media Studies Music Technology Politics Theatre Studies Philosophy and Ethics	Business French Geography History Media Studies Music Physical Education Physics Sociology	Biology Computer Science Economics English Language English Literature History Product Design Psychology Spanish	GCSE Mathematics GCSE English Language Further Mathematics Extended Project (EPQ) Med Soc
Level 3 Vocational 2 Year Courses	Level 3 Vocational Health and Social Care Level 3 Criminology	Level 3 Vocational Engineering Global Perspectives	Level 3 Vocational Sport	Level 3 Vocational Mental Health and Social Care Level 3 Vocational Applied Science	

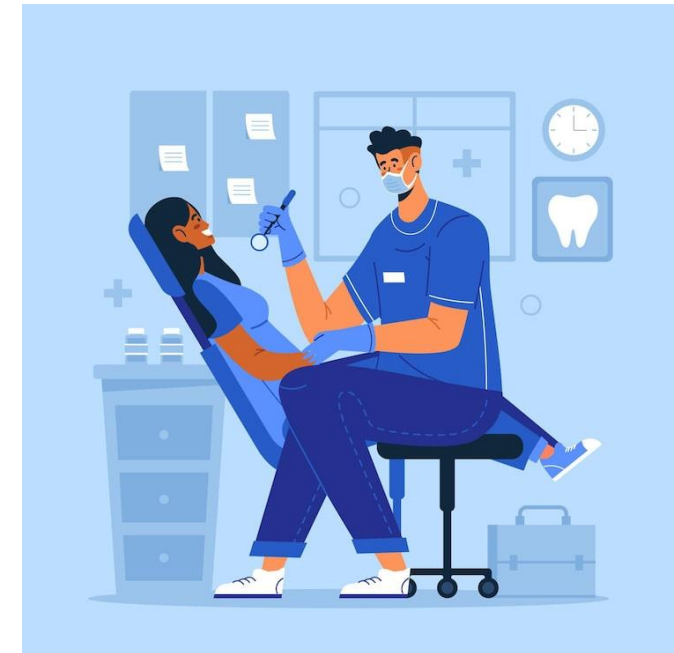
What is Med Soc?

New for Sept 2026

1 timetabled hour per week, to include:

- External Speakers from medical backgrounds
- Support with UCAT (University Clinical Aptitude Test)
- Opportunities for Work Experience
- University Visits
- Development of presentation and MMI Skills
- Dedicated Personal Statement Session

Planned, resourced but student-led to encourage independent learning, critical thinking, and exploration of medical careers



Things to consider...

The GCSE you get will impact the choices you can make.



All courses have their own entry requirements that you will need to meet to be considered. Make sure to double check these before completing an application

The paths you choose at A-Level will impact your next steps.

But don't worry...

There is lots of support available for you

- Careers team
- Form Tutors
- Sixth Form Team (Ousedale Students)
- Experienced UCAS Team (Ousedale Students)



Useful starting points:

- Unifrog
- UCAS

The School Day

Activity	Monday - Friday
AM Registration/Assembly	8:40am - 9:10am
Lesson 1	9.10am - 10:10am
Lesson 2	10:10am - 11:10am
Break 1	11:10am - 11:40am
Lesson 3	11:40am - 12:40pm
Lesson 4	12:40pm - 1:40pm
Break 2	1:40pm - 2:10pm
Lesson 5	2:10pm - 3:10pm

Dress Code

We have aimed to be in line with the modern workplace, while still fitting with our wider school setting.

Students are expected to be smart and presentable with their lanyards on while in school.

Key points:

No denim

No tracksuits

No hoodies

Trainers are a single colour, including soles and branding

No extreme hairstyles or colours

Full policy can be found on our website.

Post-16 Financial Help

Free School Meals

Students are still entitled to free school meals post-16 but you may need to reapply, especially if you join us from another school.

The 16-19 Bursary

This is additional assistance to help students overcome financial barriers that may otherwise prevent them continuing their education.

1. Vulnerable Groups Bursary (for example looked after children or receiving benefits in your own name)
2. Discretionary Bursary (E-Act Policy in line with DfE funding rule)

Our full policies can be found on the school website including the full criteria

What the students and alumni say...

“I truly believe this (Ousedale) is the best base for any adventure they wish to take on after their time at Ousedale”

“I made lifelong friends.”

“Incredible support for university.”

“Teachers treat you like adults.”

“I chose to come to Ousedale because of the community spirit and the values of the school”

How to apply:

Application is easy and is all done online via our website
<https://www.ousedale.org.uk/sixth-form-applications>

Students complete all personal details, predicted grades in all subjects and make their course selections (it is important you don't miss any subject).

Once you have applied, keep an eye on you emails as all information will be sent to the email address you use for your application.

If there are any issues with your application, you will be invited for a meeting with me or Mrs South-Greaves to discuss next steps.

Key dates

Friday 9th January – Applications open

Friday 13th March – Applications close

Friday 24th April – Latest date offers will be sent

Late June/Early July (date TBC) – Induction Day

Thursday 20th August – Results Day and Internal Enrolment
(8am-12pm)

Friday 21st August – External Enrolment (9am-12pm)



E-ACT Ousedale
School

Be Kind | Work Hard | Succeed Together

Useful Contacts

Rose Camden – Director of Sixth Form

Rose.Camden@ous.e-act.org.uk

Jessica South-Greaves – Sixth Form Pastoral and Academic Leader

(currently Year 13, Year 12 Sept 26)

Jessica.south-greave@ous.e-act.org.uk

Emma Green – Sixth Form Administrator

Emma.green@ous.e-act.org.uk

Helen Bacon – SENDco

sendtriage@ous.e-act.org.uk

