



Sixth Form Open Evening

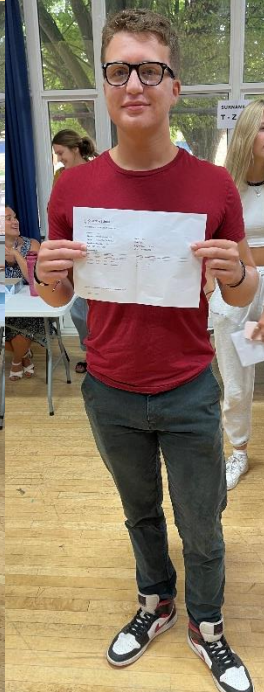
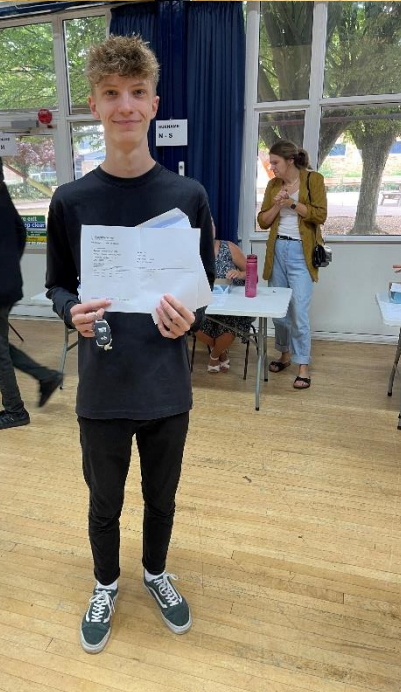
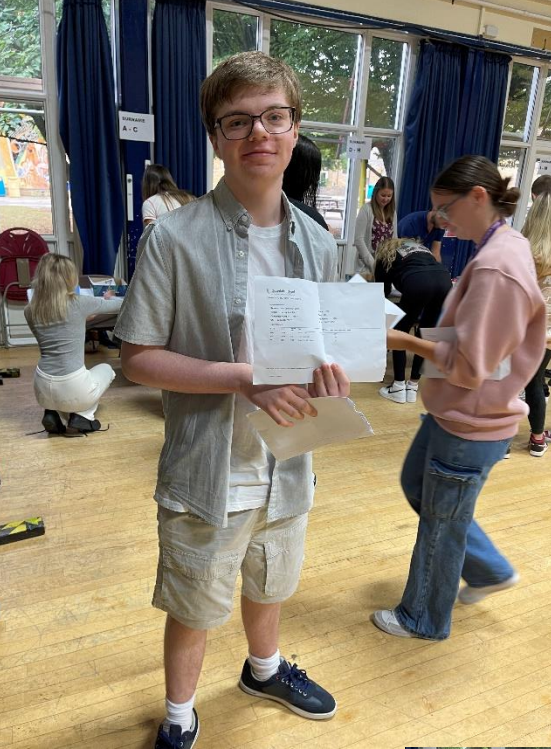
Mr Andrew Burton – Headteacher
Mr Jon Grant – Assistant Headteacher

What are we about?

Vision, Ethos, Values

Ousedale Vision

**"All young people leave Ousedale ready to succeed in life.
As effective learners they will acquire the character, experiences,
knowledge, skills and qualifications which will enable them to thrive,
and lead successful, happy lives."**



Provider name	Course placed
University of Northampton	Psychology
University of Bath	Natural Sciences
Loughborough University	Chemical Engineering (with placement year)
University of Warwick	History and Politics
University of Nottingham	Plant Science (4 years)
University of Surrey	Law with International Relations
Durham University	Physics
University of Nottingham	Environmental Science (4 years)
University of Liverpool	Medicine
University of Northampton	Sociology
University of Oxford	Biochemistry(Molecular and Cellular)
University of Nottingham	Industrial Economics with Insurance with a Placement Year
University of Nottingham	Law
Cornwall College	International Golf Management
University of Sussex	Media Production
Newcastle University	Business Management
London School of Economics and Political Science, University of London	History
Loughborough University	Chemical Engineering (with placement year)
University of Sussex	Music Technology
The University of Edinburgh	Geophysics and Geology
Loughborough University	Sport and Exercise Psychology (with placement year)
University of Leeds	Environmental Science (International)
University of Surrey	Computer Science
University of Nottingham	Sociology
University of Nottingham	Veterinary Medicine
University of Nottingham	Pharmacy(4 years)
London School of Economics and Political Science, University of London	Economic History and Geography
University of Northampton	Sociology
University of York	Economics

University of York	Economics
University of Nottingham	Psychology
University of Northampton	Environmental Science
University of Northampton	Health Sciences
University of Bath	Chemical Engineering
University of Sussex	Filmmaking
University of Birmingham	Sociology
University of Bath	Mechanical with Automotive Engineering (with placement)
University of Sussex	Psychology (with a foundation year)
University of Northampton	Midwifery
Cardiff University	Human Geography and Planning
University of Warwick	Sociology
University of Warwick	Film and Literature
UCL (University College London)	Medicine (6 years)
Loughborough University	History
University of Northampton	Product Design
University of Sussex	Media Production
University of Northampton	Early Childhood Studies (with Foundation Year)
University of Bath	International Development with Economics

Mercedes

Price Waterhouse Cooper

Santander

Unilever

Foreign Commonwealth and Development Office

Scholarships in the USA

Prague University of Economics and Business

Sofia Medical University

Sixth Form Team



Results

Consistently high; Academic and Vocational

55% A* - B

Average Grade: B

Students Achieving AAB Including 2 Facilitating subjects: 20%

Destinations

Typically 1/3 go on to Russell Group Universities including Oxbridge
Many students go on to a degree apprenticeship
Some look further afield

Curriculum

**Range of subjects; 'Traditional' and Vocational
Ensure students can chose the appropriate pathway
Results in aspirational destinations**

What our Pupils say

Experiences

Careers Education, Information, Advice and Guidance

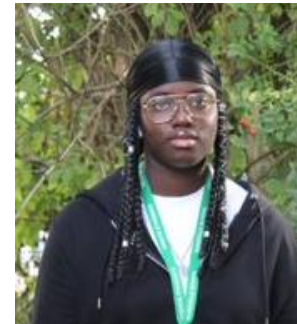
Widening opportunities

Subject opportunities

Leadership

Sport





	Block A (5 Hours)	Block B (5 Hours)	Block C (5 Hours)	Block D (5 Hours)	Block E/Core Curriculum
Level 3 Academic A Level 2 Year Courses	Business English Language English Literature History Mathematics Further Mathematics Sociology Photography Psychology	Art Chemistry Economics Financial Studies Geography Media Studies Music Technology Politics Theatre Studies	Business French Geography History Media Studies Music Physical Education Physics Sociology	Biology Computer Science Economics English Language English Literature History DT: Product Design Psychology Spanish	Financial Studies GCSE Mathematics GCSE English Language Further Mathematics Extended Project (EPQ) Philosophy & Ethics
Level 3 Vocational 2 Year Courses	<ul style="list-style-type: none"> • Level 3 Vocational Health and Social Care • WJEC Criminology 	<ul style="list-style-type: none"> • WJEC Food Science and Nutrition • Level 3 Vocational Engineering 	<ul style="list-style-type: none"> • Level 3 Vocational Sport 	<ul style="list-style-type: none"> • Level 3 Vocational Health and Social Care* • Level 3 Vocational Applied Science 	

Key Dates

Tomorrow – Applications open

10th March – Deadline for applications

April/May – Qualification Guidance Discussions

3rd – 4th July – Induction

24th August – Results

24th – 25th August – Enrolment

"Pupils have a broad and rich curriculum in the Sixth Form."

Ofsted January 2020

"Sixth Form pupils feel that staff support them well. Pupils appreciate the varied sessions on personal development. They also receive high quality advice about possible career opportunities. This means that they are well prepared to leave Sixth Form and pursue their goals."

Ofsted January 2020

"Pupils are proud to be members of Ousedale School."

Ofsted January 2020

Thank you for joining us
for the presentation **tonight;**
we **hope** to
welcome you in **September**
2023