



Ousedale School
Aspire | Believe | Achieve



NEWPORT PAGNELL • OLNEY

www.ousedale.org.uk



PROSPECTUS
2021 - 2022



Ousedale School
Aspire | Believe | Achieve



WELCOME

I am delighted to welcome you to Ousedale School, an award winning, vibrant 11-19 academy set across two campuses, Newport Pagnell and Olney. We have an absolute belief that all children can and will succeed through becoming successful learners.

We have received a number of national awards not only for our academic success, but also for our success in the field of music education. Recent honours include 4 national awards for progress and attainment at GCSE and A level, placing our results in the top 20% of schools nationally, and a local award for achieving the best results for disadvantaged children in Milton Keynes. Additionally, the school's Sixth Form regularly achieves the highest proportion of the top A*/B grades in the region. We endeavour to remain in the top 20% of school's nationally in everything we do.

However, proud as we are of our academic excellence, Ousedale offers much more to the pupils who join our thriving community. Outstanding pastoral care is the norm, and extensive extra-curricular and enrichment programmes are an integral part of our curriculum. You will no doubt read our latest Ofsted report, but I would draw your attention to one line in particular that I am incredibly proud of: "This is a school where, as one pupil put it, 'everyone is included'."

I look forward to welcoming you into the Ousedale family.

Andy Burton – Headteacher



OUR VISION

The school places at its heart a relentless focus on standards combined with a strong emphasis on the development of each young person's skills and attributes. Our goal remains to enhance and develop our exceptional learning community for all students.

We have built a reputation for providing outstanding pastoral care; this is combined with a strong emphasis on building resilience, relationships, engagement, effort and providing constructive feedback. A child, first and foremost, is an individual to get to know, understand and respect, and secondly an Ousedale School student.

The vision is heavily influenced by our values and beliefs about education and is shared by the staff and governing board; it also reflects the changing national landscape and the return to more challenging examinations with a greater emphasis on literacy, numeracy and the mastery of knowledge. Opportunities to broaden horizons and develop character are a very strong feature of the school. Whilst we provide students with an incredible range of enriching opportunities, our notable expertise and passion lies in the field of music and forms an integral part of school life.

Students will leave Ousedale equipped to compete in a changing world and with a strong set of British values: democracy, the rule of law, individual liberty, mutual respect and tolerance. It is very important to us that each student, regardless of their ability, has the opportunity to shine.

We want our students to be able to realise the words of our motto to 'Aspire, Believe, Achieve'.



OUSEDALE MOTTO

ASPIRE

Students, supported by staff and parents, are motivated to aim high in everything they do. They aspire to new heights: academically, practically and through the acquisition of new skills.

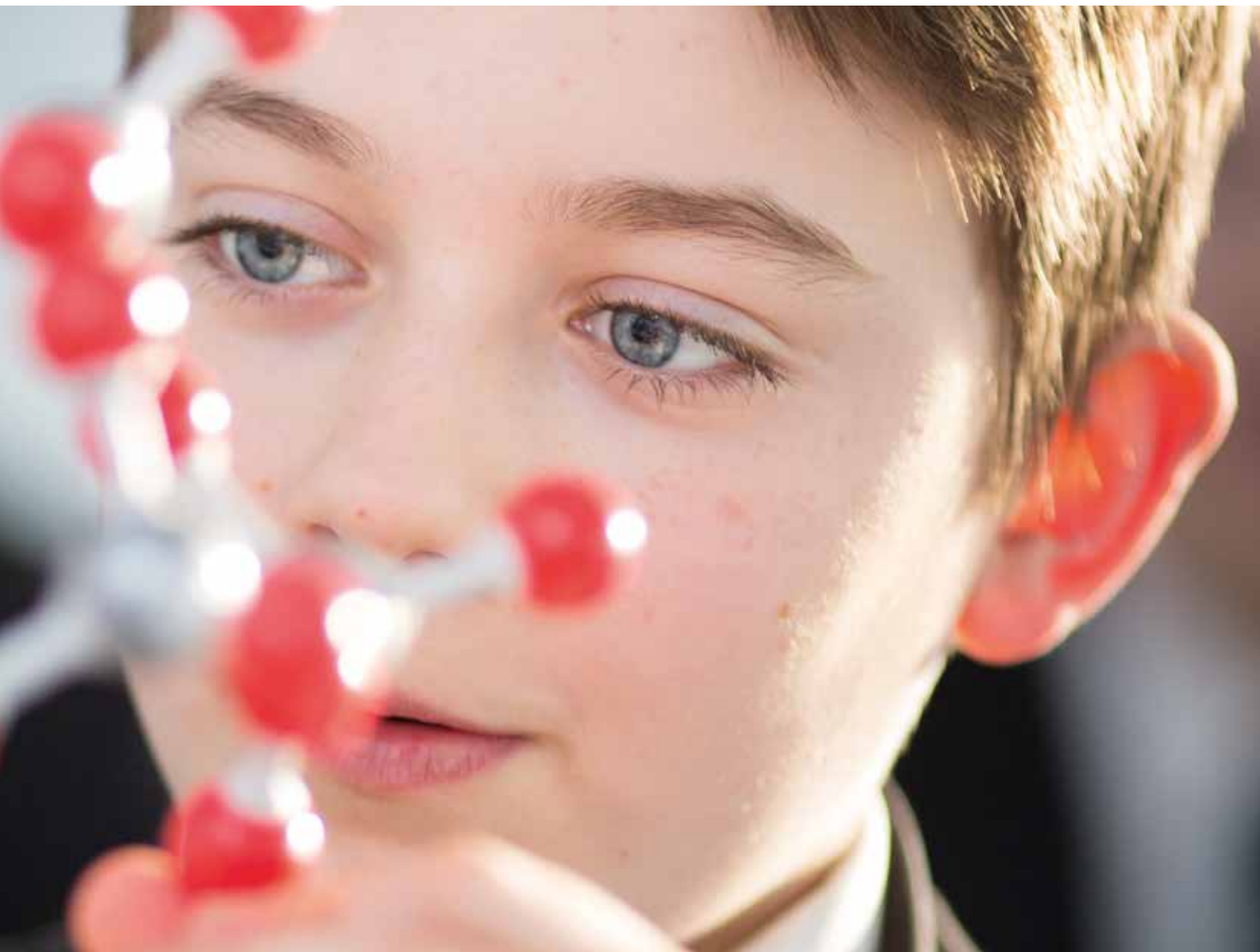
BELIEVE

Students, with staff, develop resilience, independence and self-belief in their ability to lead and reach challenging targets.

ACHIEVE

Students achieve outstanding results and share responsibility for their learning, enabling them to progress on to pathways of their choice, succeed in a competitive world and contribute to the success of the school.





OUR AIMS

To enhance and develop our exceptional learning community through:

- High expectations and standards
- Nurturing a thirst for knowledge and a love of learning
- Excellent teaching
- Personalised support and guidance broadening horizons and developing character
- Enriching opportunities for all
- Effective and creative partnerships with students, parents and our community

THE CURRICULUM

We believe that it is important for students to follow a broad and balanced curriculum throughout their school lives, particularly up to the age of 16. The idea is certainly reflected in the Ousedale curriculum, and will be increasingly relevant in a constantly changing scene for employment and Further Education.

We believe the whole curriculum provides opportunities for the development of personal and social skills. All subject areas aim to contribute to the spiritual, moral, social and cultural (SMSC) development of students in an environment that promotes British values.

The curriculum also reflects acknowledgement of our responsibilities towards developing student health and well-being. In this way our curriculum and pastoral systems work together for the progress of all students.

“ COMMITTED TEACHERS USE THEIR EXCELLENT SUBJECT KNOWLEDGE TO ENSURE THAT ALL PUPILS, AND PARTICULARLY PUPILS WITH SPECIAL EDUCATIONAL NEEDS AND/OR DISABILITIES (SEND), ACHIEVE WELL. TEACHERS DEVELOP PUPILS’ LEARNING OVER TIME SUCCESSFULLY SO THAT LESSONS ENCOURAGE PUPILS TO BE ATTENTIVE, INQUISITIVE AND HARD WORKING. PUPILS COMPLETE WORK THAT IS DEMANDING.”

OFSTED - JANUARY 2020



KEY STAGE 3

Our whole school curriculum in Years 7, 8 and 9 covers English, Maths, Science, Computing and Digital Applications, Technology, Art, Music, Drama, History, Geography, Modern Foreign Languages, Physical Education, Religious Education and Personal Development.

Students will be able to choose some options in Arts and Technology for their Year 9 study.

We employ specialist staff to work 1 to 1 with students to develop literacy skills. This ensures all students have the skills required to be successful in their GCSE exams.

“ PARENTS ARE VERY POSITIVE ABOUT THE SCHOOL. THEY BELIEVE THAT STANDARDS OF BEHAVIOUR, SAFETY AND TEACHING ARE HIGH. ”

- OFSTED - JANUARY 2020

KEY STAGE 4

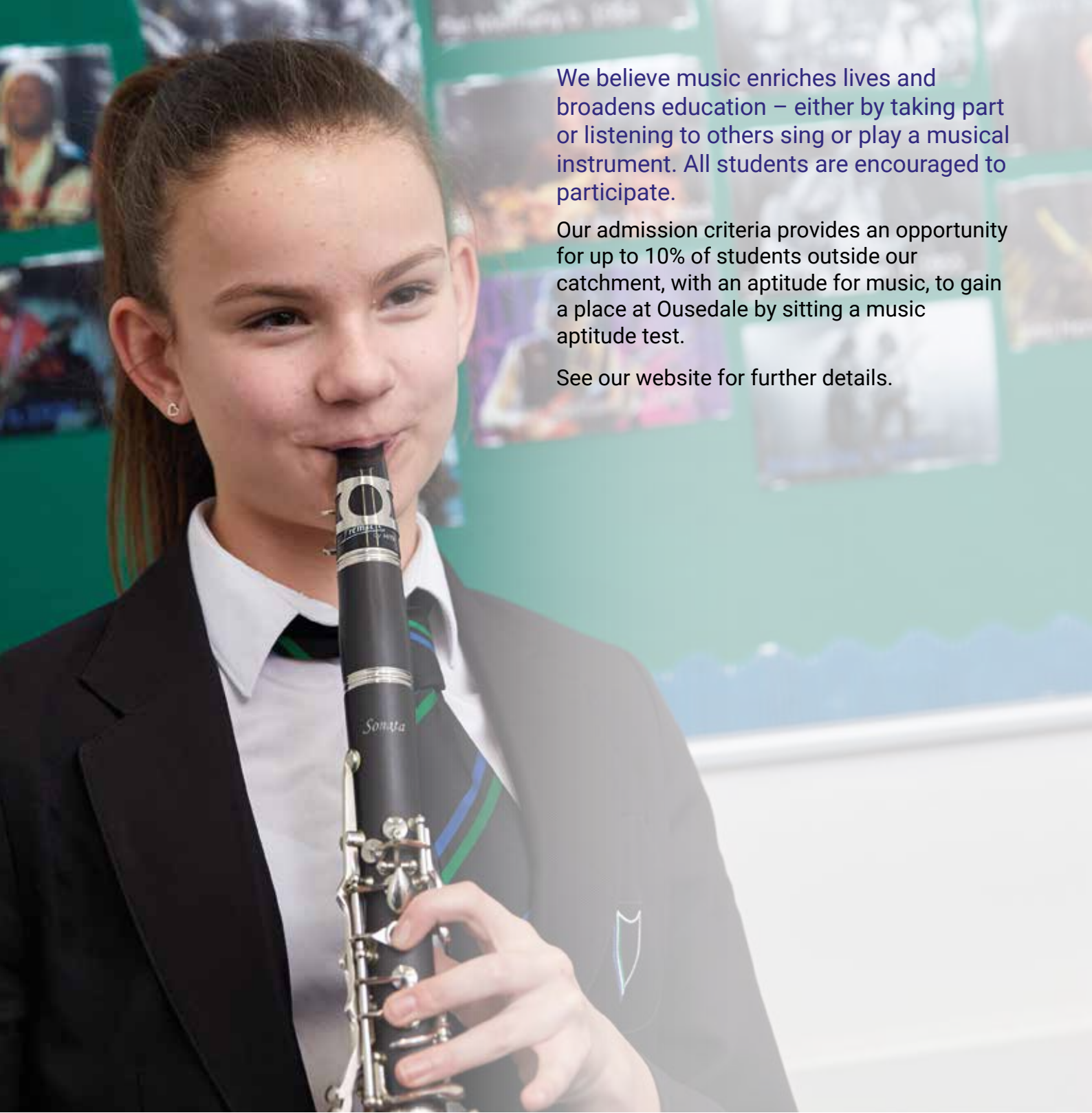
The Key Stage 4 core curriculum embraces English Language and Literature, Maths, Science, Religious Studies, Physical Education, Careers and a Personal Social and Health Education programme (PSHE). In Years 10 and 11 a degree of choice is available within a broad curriculum framework. The choices are made in Year 9 by students and their parents, in consultation with subject and form tutors.

Our curriculum is student focused and sufficiently flexible, to ensure that students can either follow an exclusively academic route, or an amalgam of academic and vocational options.

Students choose options from a range of subjects that currently includes: History, Geography, French, Spanish, Music, Drama, Art, Design, Food, Catering, Engineering, Sport, Health & Fitness, Health & Social Care, Business, Enterprise, Computing, IT. (Final offer subject to change)



MUSIC SPECIALISM

A young woman with brown hair tied back, wearing a dark school blazer over a white shirt and a striped tie, is playing a black clarinet. She is looking towards the camera with a slight smile. The background is a green bulletin board with various photos and posters.

We believe music enriches lives and broadens education – either by taking part or listening to others sing or play a musical instrument. All students are encouraged to participate.

Our admission criteria provides an opportunity for up to 10% of students outside our catchment, with an aptitude for music, to gain a place at Ousedale by sitting a music aptitude test.

See our website for further details.



“THERE ARE A WIDE RANGE OF OPPORTUNITIES TO DEVELOP PUPILS’ MUSICAL TALENTS. MANY PUPILS LEARN TO PLAY MUSICAL INSTRUMENTS AND ARE KEEN TO JOIN THE SCHOOL ORCHESTRA.”

- OFSTED - JANUARY 2020



ENRICHMENT

Extra-curricular activities and our Enrichment programme which includes Student Leadership Development, Duke of Edinburgh Award, music, drama and sport make Ousedale School an incredible place for students to learn and grow.

Some of the activities on offer include:

MUSIC

Instrument tuition, orchestra, young musician of the year, school productions and a range of choirs.

SPORT

Football, rugby, cricket, basketball, handball, tennis, rounders, cycling, fencing, street dance, athletics and trampolining.

UNIVERSITY PREPARATION SESSIONS (ASPIRE)

Debating, university visits, molecular biology, quantum mechanics, code breaking, game theory, microbiology, forensic science and philosophical enquiry.



“PUPILS ARE PROUD TO BE MEMBERS OF OUSEDALE SCHOOL. THEY TAKE ADVANTAGE OF THE MANY EXTRA-CURRICULAR ACTIVITIES AVAILABLE TO THEM.
OFSTED - JANUARY 2020 ”





CAREERS

The work of Careers Information, Advice and Guidance is seen as an important part of a student's entitlement. Ousedale School believes in the importance of fostering strong links with Careers Advisory Services, institutes for further education, business and industry in order that all students have a broad information base from which to make decisions about career pathways.

Ousedale encourages close links with parents, ensuring they share in establishing a partnership in which students will be able to make sensible, informed career choices. It is recognised that Careers Information, Advice and Guidance occurs across the whole curriculum and involves all staff.

ASSESSMENT & REPORTING

We monitor students' progress closely through regular assessments. This allows us to address underachievement quickly, and provide new challenges to those who are doing well.

This is achieved through:

- *Regular literacy testing*
- *Close monitoring of class work and homework*
- *Moderation of student work against national standards*
- *Tests at regular intervals throughout a subject course*
- *End of year examinations*

Progress Review reports are sent home regularly to parents providing information about progress towards targets, attainment, homework, attitude to learning, attendance and behaviour.

ADMISSIONS

Applications are made to Ousedale School as a whole and no preference for campus allocation can be made. Students are allocated Newport Pagnell or Olney campus depending on their permanent residential address.

A varied programme of primary-secondary transition activities and student induction, together with further meetings for parents, will take place during the two terms before enrolment.



STUDENT SUPPORT

Our aim is to ensure that all our students achieve their full potential both academically and socially. The school employs an array of specialist staff to support the needs of all of our students including: specialist teachers, health co-ordinators and a range of teaching assistants, many with Higher Level qualifications.

Students may also receive support, as appropriate to their needs, from counsellors and other external agencies.

All students receive regular 1 to 1 interviews with their Form Tutor or a senior member of staff.



SAFEGUARDING AND CHILD PROTECTION

At the core of our belief structure is a profound responsibility for child welfare. Each campus has staff who have designated child protection responsibilities. In addition to this regular staff training is undertaken so that every single member of Ousedale staff is aware of his or her role to report any concerns they may have about child welfare. We work with students, families and outside agencies to support all of our children in education.



PARTNERSHIP WITH HOME

Working in close partnership with parents remains at the heart of our work because we believe that mutual support and partnership is the very best way to support our students.

The work of the form tutor is fundamental to this and form tutors, who see their tutees twice a day, are the lynch pin of our pastoral system. They are supported in their roles by the Pastoral and Academic Leaders and the Senior Leadership Team.





Ousedale School
Aspire | Believe | Achieve



NEWPORT PAGNELL

THE GROVE, NEWPORT PAGNELL,
BUCKINGHAMSHIRE, MK16 0BJ

TEL: 01908 210203



OLNEY

ASPREYS, OLNEY, BUCKINGHAMSHIRE,
MK46 5LF

TEL: 01234 717480

www.ousedale.org.uk
admin@ousedale.org.uk

